

Smart Parking Revolution

Transforming Urban Parking Through Technology

Meeting with me usually means:

- **Revenue leakage** from poor payment tracking, outdated machines, or unpaid parking.
- **Outdated infrastructure** makes you look behind competitors in terms of modernization and customer service.
- **Manual monitoring** requires more staff, increasing operating costs.
- **Traffic congestion** in and around their parking facility frustrates visitors.
- **Customers waste time** looking for available parking spots, leading to complaints and bad reviews.

Purpose of cooperation with Inova Tech:

1. **To improve customer experience** with smooth entry, fast parking, and easy payment.
2. **To maximize parking revenue** with digital payment, less fraud, and automated control.

How? Through our CPMSystem.

Why it's different?

Without software, you can't track or validate payments.



You can't connect these 2 components (e.g. SMS and Scan Car) without software.

You can't track unpaid receivables for foreign clients, and we have that within the software.

Complete Parking Management System

Integrated platform for comprehensive parking control

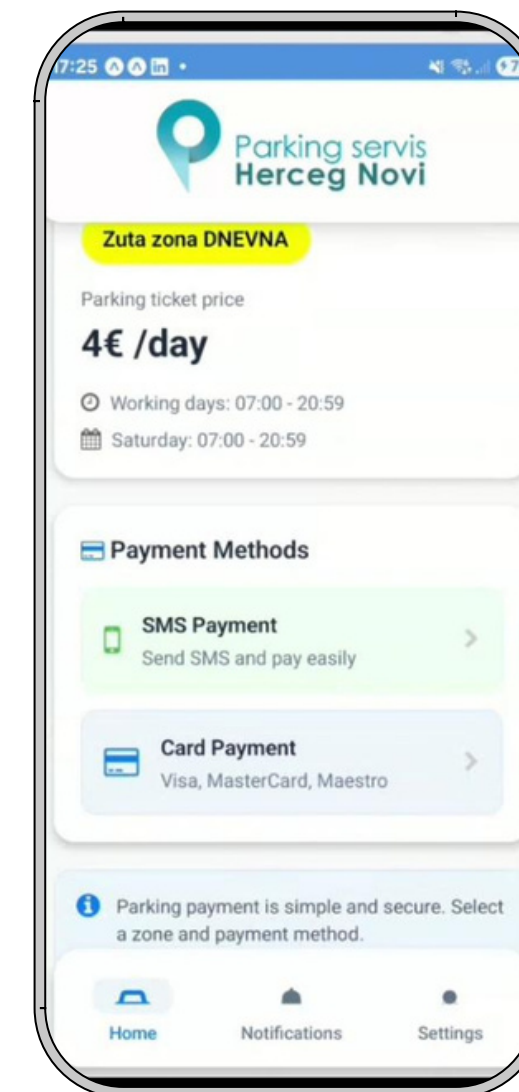


+ Integration with Municipal Services

Payment Solutions

Multiple channels for seamless transactions

- Mobile App
Real-time payments & notifications
- SMS (Quick payment via text message)
- Digital Kiosk (Payment at kiosk via Android terminals)
- Payment Terminal (Traditional cash (coin) & card payments)

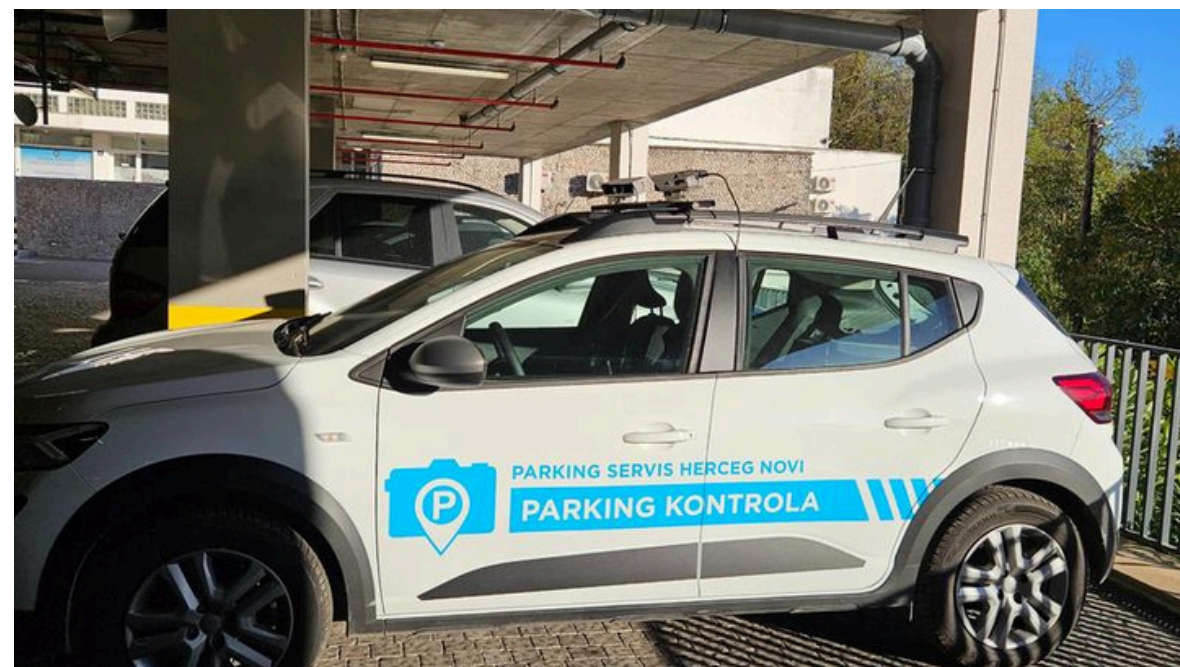


Enforcement Solutions

Automated and manual control systems



Controllers verify license plates



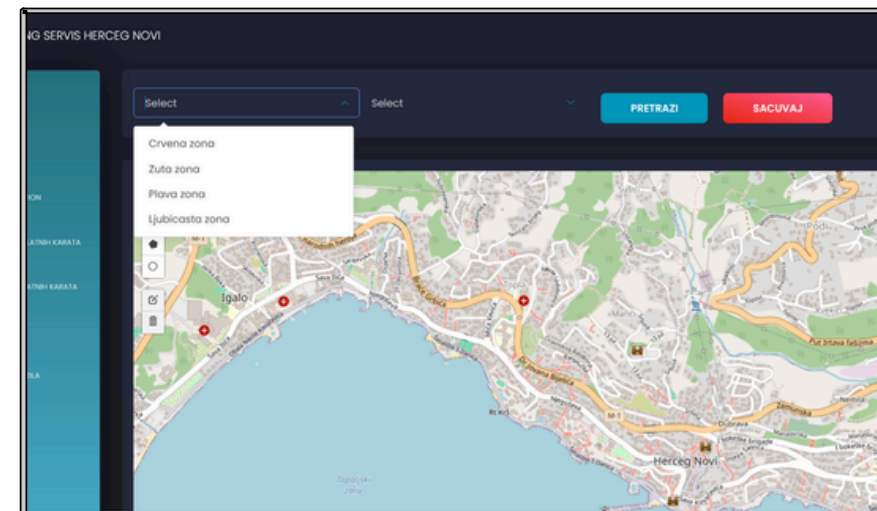
Automatic Scan-Car

LPR cameras automatically scan all plates

- Real-time GPS logging
- Eliminates corruption
- 65% more detections

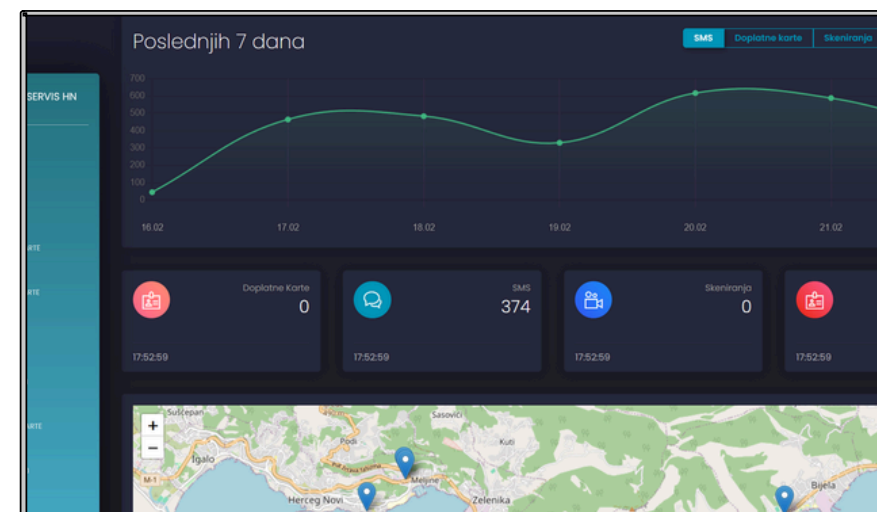
Management Software

- Back-office application
- Real-time GPS tracking of parking controllers and vehicles
- Call center system
- Automated payment control
- Subscription cards and monthly passes



The screenshot shows a table of parking transactions. The table has columns for DATUM, ZONA, TABLICE, TELEFON, KOD, OPERATER, CENA, and STATUS. The data is as follows:

DATUM	ZONA	TABLICE	TELEFON	KOD	OPERATER	CENA	STATUS
22.2.2025, 17:36:44	Zuta zona	SC04NE	3826955160	14513	ONE	4 EUR	NAPLACENO
22.2.2025, 17:26:38	Zuta zona	B0147PH	38267034960	14512	TELEKOM	0,6 EUR	NAPLACENO
22.2.2025, 17:22:28	Zuta zona	HNB0926	38263214433	14512	ONE	0,6 EUR	NAPLACENO
22.2.2025, 17:22:12	Zuta zona	HNB0926	38263214433	14512	ONE	0,6 EUR	NAPLACENO
22.2.2025, 17:21:34	Zuta zona	K08N520	38269638440	14512	ONE	0,6 EUR	NAPLACENO
22.2.2025, 17:21:18	Zuta zona	HNB5955	38267882845	14512	TELEKOM	0,6 EUR	NAPLACENO
22.2.2025, 17:20:39	Zuta zona	HNB0668	38269426477	14512	TELEKOM	0,6 EUR	NAPLACENO



The screenshot shows a table of parking transactions. The table has columns for IME, DATUM, PORUKA, and PLACANJE. The data is as follows:

IME	DATUM	PORUKA	PLACANJE
No Data			

Tow Truck App



- Tow truck service monitoring
- Direct communication via software

Results You Can Expect:

- **Customers find parking in minutes** and leave happy, boosting their return visits.
- **Revenue increases** due to full payment collection and reduced leakage.
- **Facility runs with less staff stress**, freeing them to focus on other priorities.
- **Management can monitor parking remotely** in real time with dashboards.
- **Your organization is seen as modern**, innovative, and customer-centric.

Smart Parking offers fast payments via SMS, digital kiosks, app, and entrance machines.

A Scan Car automates license-plate checks, cutting violations and boosting revenue by up to 40%. The municipality gains efficient control and smoother traffic.

Case Study: City of Herceg Novi, Montenegro

Parking Service Digitalization

Initial situation (what we found)

The parking service used SMS payment and controllers who walked around on foot, scanning license plates. Problem: A slow, inefficient process prone to corruption – drivers were bribing controllers to “forget” violations.

→ The city was losing up to 30% of its potential revenue.

Key problem

There was no real-time overview of scanned/paid vehicles – each controller “from their own list”, with no synchronization and no central audit.

Solution and Results

Solution

Installation of LPR cameras on patrol vehicles (“scan-cars”) and connection to a central software system – each drive-through automatically scans all license plates.

Results

- +65% more registered vehicles (without additional inspectors)
- All opportunities for bribery eliminated (GPS log + timestamp)
- +40% increase in fine revenue

Next steps: Expansion to the entire fleet, dynamic route optimization, integration with a mobile app.

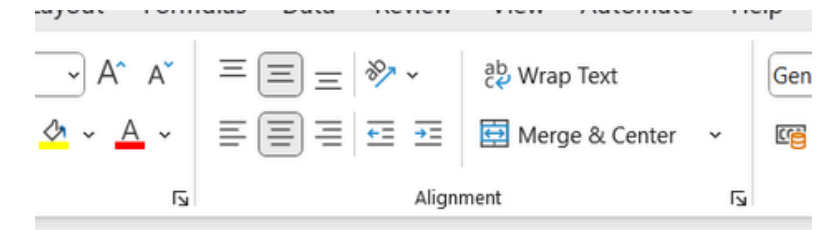
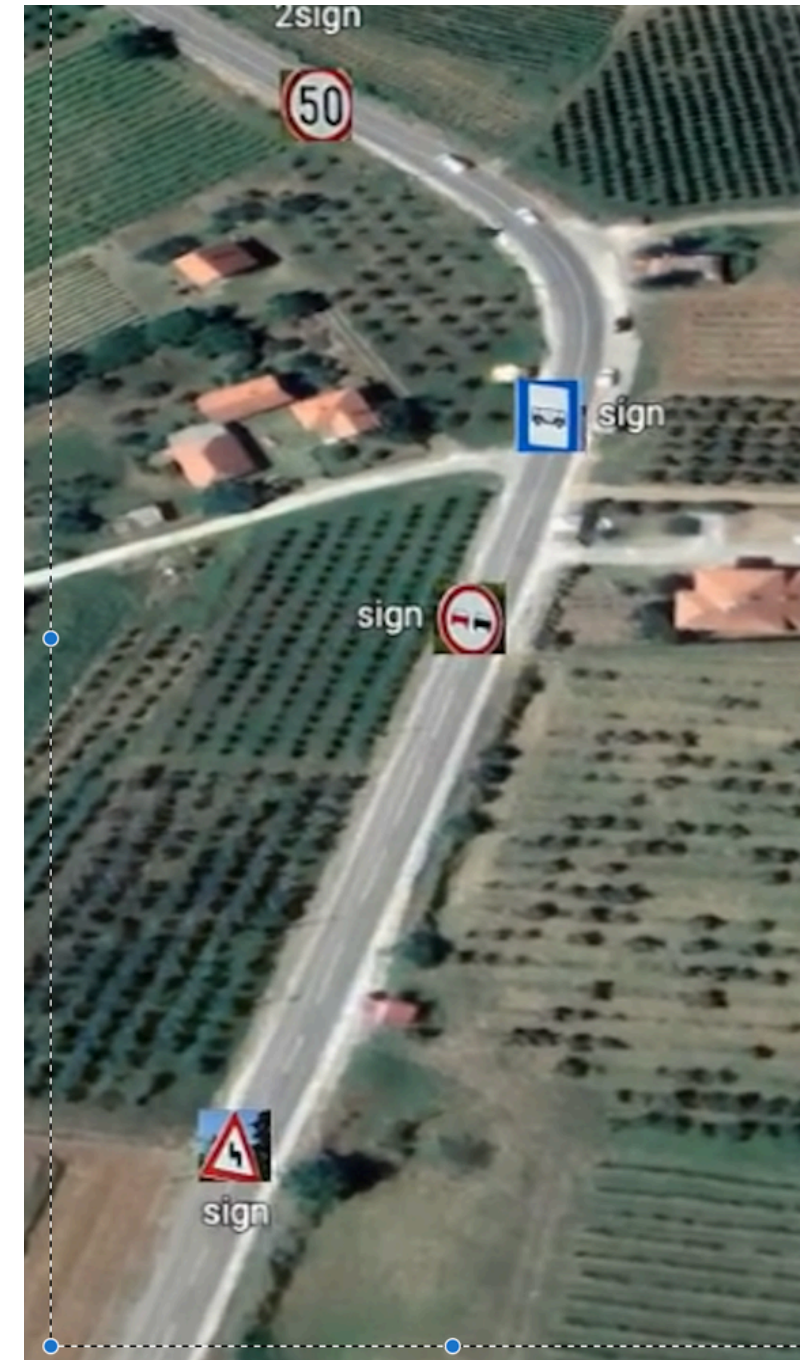
Case Study: City of Podgorica, Montenegro

Traffic Sign Monitoring & Management

Initial situation (what we found)

The city had no centralized database for tracking the location and condition of traffic signs. Management relied on manual reporting and sporadic inspections.

Signs were frequently stolen, damaged, or missing – often going unnoticed for weeks. Without a central registry, the city had no way of knowing which signs were in place and which needed replacement. → This directly contributed to increased traffic accidents at affected locations.



	C	D	
	44.19384167	20.5	
	44.1939235	20.!	
	44.1939455	20.5	

Key problem

No centralized system for real-time tracking of traffic sign inventory and condition – no way to flag missing or damaged signs before they became a safety hazard.

Solution and Results

Solution

We deployed a specialized vehicle equipped with cameras that automatically patrols city roads, capturing and identifying every traffic sign along its route. The system logs each sign's location, type, and condition, then syncs all data to a central database in real time — ensuring that any missing, stolen, or damaged sign is detected and flagged immediately for replacement.

Results

- Updated digital database of traffic signs and rapid detection of missing signs.
- 30% savings in the city's budget on court compensation payments that were previously paid out due to signs that did not exist.

Other Parking & Traffic Solutions

- Street and garages guidance sensors for detecting presence of vehicles
- Closed parking system with barriers and payment
- System for detecting traffic signs and communal infrastructure



Next Steps:

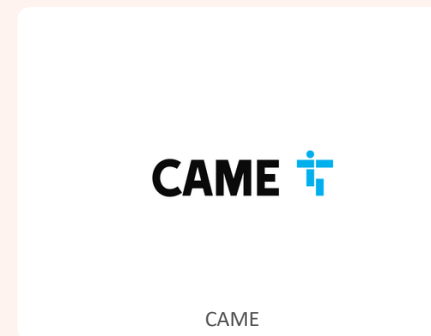
- How much does this make sense for you on a scale from 1-10?
- **I suggest that we arrange the next meeting where we can talk more about the details.**

Thanks for your attention,
Boris Petković

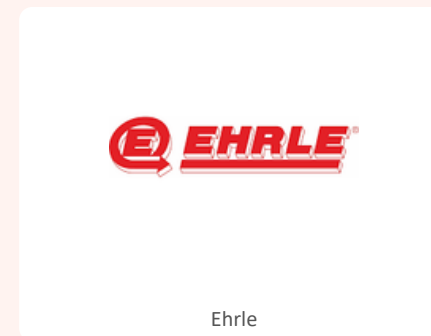
Our Partners & Clients



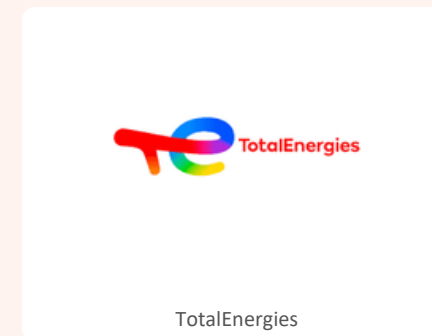
Tecon



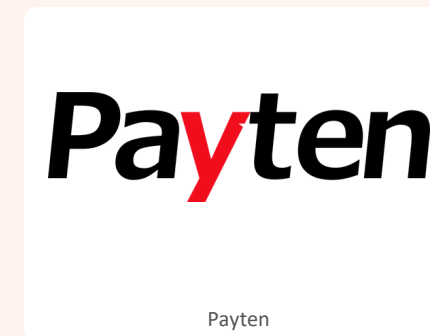
CAME



Ehrle



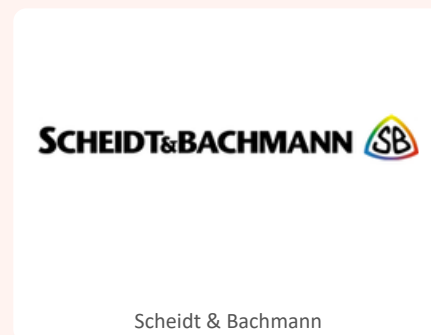
TotalEnergies



Payten



MPS Austria



Scheidt & Bachmann



Adriatech



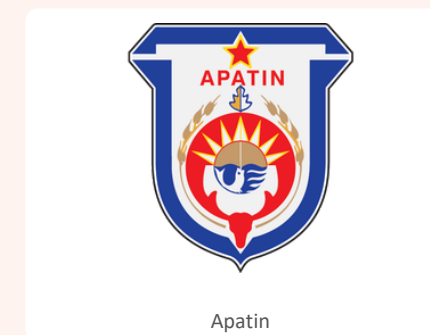
SysTeh



BAS



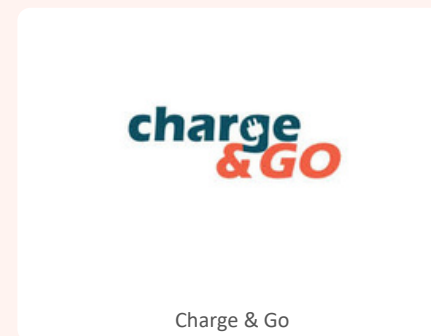
Slovo



Apatin



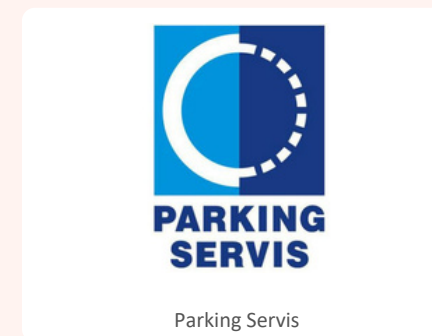
Covels



Charge & Go



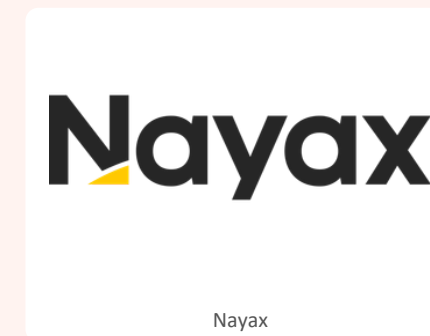
Yandex



Parking Servis



Galerija Belgrade



Nayax



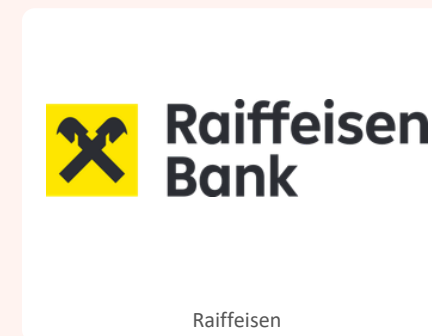
MTS



A1



Yettel



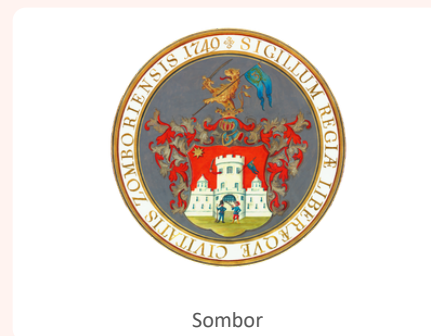
Raiffeisen



Podgorica



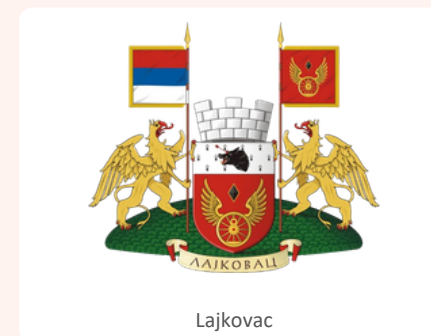
VAT



Sombor



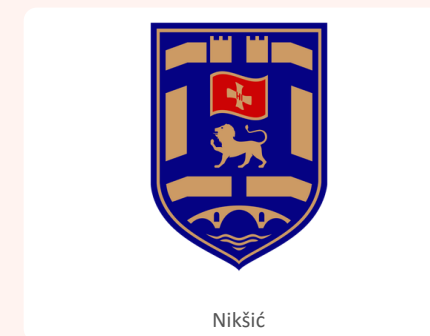
Budva



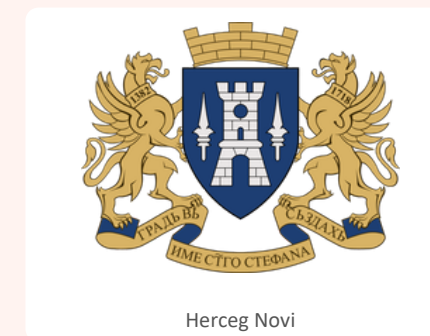
Lajkovac



Topola



Nikšić



Herceg Novi